

JOINT & SEVERAL LIABILITY WEBINAR:

**Key Insights,
Practical
Guidance &
Agency Portal
Demonstrations**



Our Joint & Several Liability webinar held on 20th January was designed to help recruitment agencies understand the upcoming legislative changes, the risks posed by Joint & Several Liability, and the practical steps that can be taken to protect your business.

We introduced our solution – the NEW Agency Portal, demonstrating how real-time HMRC validation and enhanced visibility can support compliance for agencies.

To make this information easier to revisit and share, we've created a series of short, focused video clips taken from the webinar. Each video covers a specific topic, allowing you to quickly access the areas that are most relevant, from understanding HMRC expectations to seeing how the PGS compliance solution works in practice.

Each video can be watched individually or as part of the full series, allowing you to quickly access the topics most relevant to you and your team.

Watch the videos at your convenience, share them with your team, and if you'd like a personalised demonstration or further guidance on how we can support your agency, please get in touch with the People Group Services team.



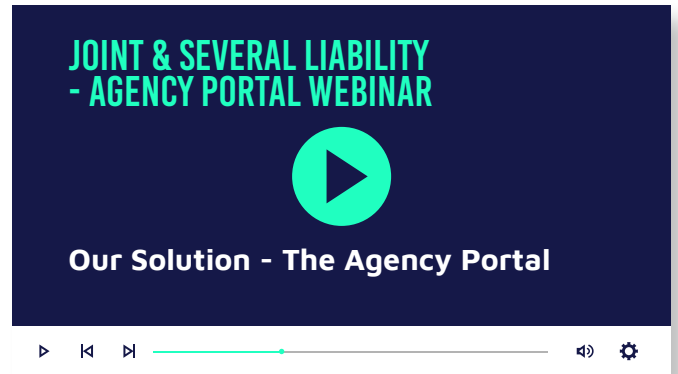
Joint & Several Liability – What is it?

A quick overview of Joint & Several Liability and the challenges it introduces for recruitment agencies, including increased supply chain accountability, the need for stronger due diligence, and the operational impact of proving compliance. We also cover where the rules have come from, when they take effect, and what agencies should be preparing for ahead of launch.



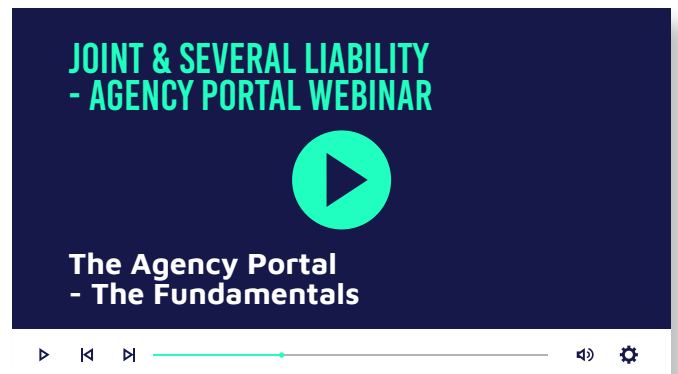
Our Solution - The Agency Portal

An overview of the People Group Services' solution to the changing legislation. This video introduces the Agency Portal and explains how it combines automation, AI-driven background checks, and precision compliance tools to give agencies real-time visibility, live data recall, and practical controls to manage risk under Joint & Several Liability, without adding manual workload for your agency.



The Agency Portal - The Fundamentals

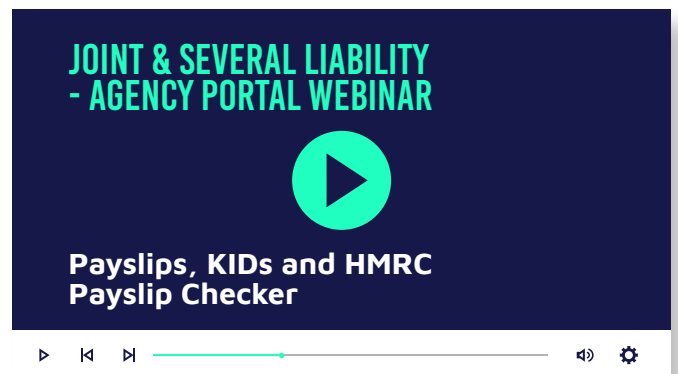
A walkthrough of the core features of the Agency Portal, showing how agencies can navigate the system and use its intelligent dashboards, automated background processes, and dynamic reporting tools to support day-to-day use and compliance in a clear, practical way.



Payslips, KIDS and HMRC Payslip Checker

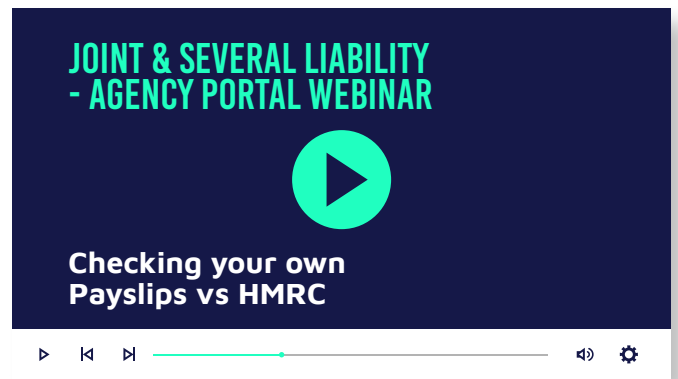
A live demonstration of the system from an agency user's perspective, showing exactly what you will see inside the Agency Portal after payroll has run. It covers the payslip view, assignment schedule and the Key Information Document (KID), giving clear end-to-end visibility of pay and deductions at an individual, granular level.

The clip then demonstrates the portal's standout feature: intelligent, automated verification of PAYE tax and National Insurance against HMRC's own tools, producing HMRC-aligned results and a secure evidence trail to support compliance and reduce Joint & Several Liability risk.



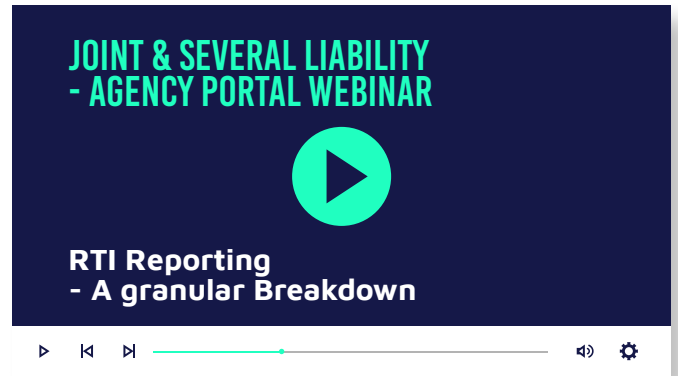
Checking Your Own Payslips vs HMRC

This clip highlights what's happening behind the scenes and how time-consuming and manual the process can be if agencies try to verify payslip calculations themselves. It shows how we verify payslips against HMRC information using automated validation and precision checking tools, confirming that deductions, tax, and net pay align with what should be reported and paid.



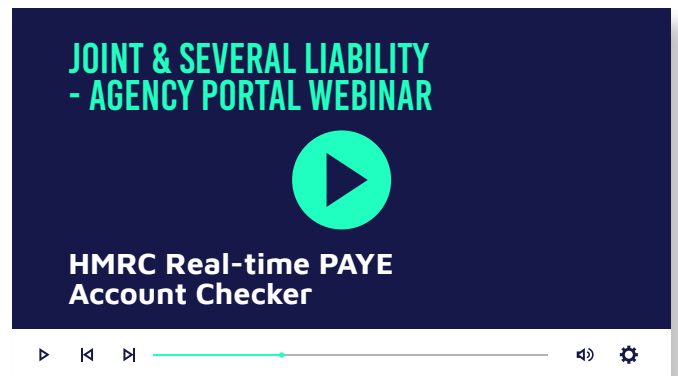
RTI Reporting - A Granular Breakdown

A walkthrough of what happens after payroll has run, using a real RTI model to show the full RTI submission for a specific umbrella and agency. This clip demonstrates how agencies can interrogate data at a granular level, drilling into their own contractors, payments, and submissions, while also seeing controlled, permission-based views of the wider RTI picture using live data tools unique to PGS.



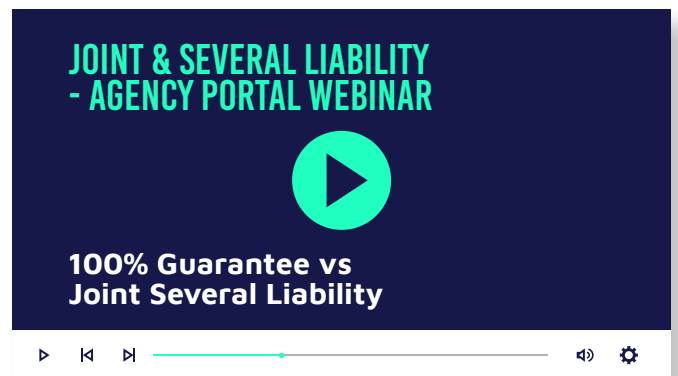
HMRC Real-time PAYE Account Checker

This clip shows what's available when you log in and run the HMRC Real-time PAYE Account Checker for yourself, including the PAYE account history and what is currently due. We also explain that agencies will receive a screenshot output for their records, which can be retained as evidence alongside RTI submissions and payment confirmations going forward.



100% Guarantee vs Joint & Several Liability

This clip explains how People Group Services can support agencies in staying compliant under Joint & Several Liability. It highlights that the best next step is a one-to-one conversation to understand the agency requirements and agree the most effective route forward.



Questions and Answers

A summary of the key questions raised during the webinar, along with practical responses and clarifications provided by the PGS team.

We have also produced a separate document which covers other questions we have received since the webinar.

